

Fitting Instructions



SKU

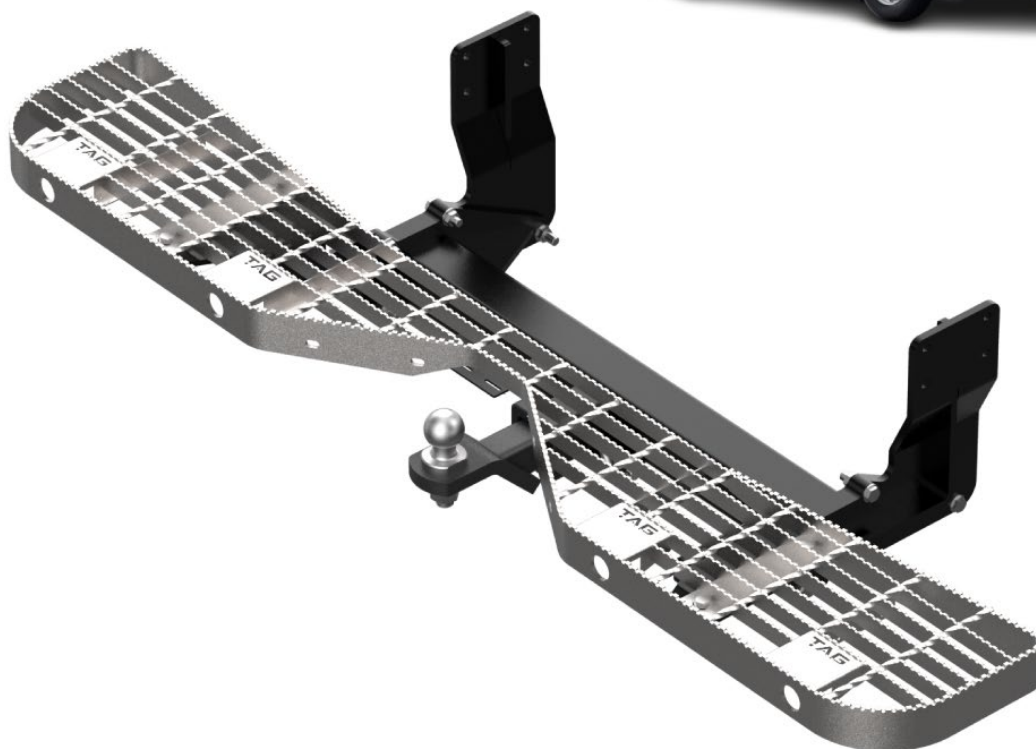
T7P880

PRODUCT

Heavy Duty Towbar & Galvanised Step for Mercedes Sprinter VS30 Van (Wide Chassis)

SPECIFICATIONS

- Towbar Class: CL 4 Heavy Duty
- Towing Capacity: 3500kg
- Tow ball Weight: 350kg
- Approx. Fitment Time: 90 Minutes



Scan for latest version of these instructions

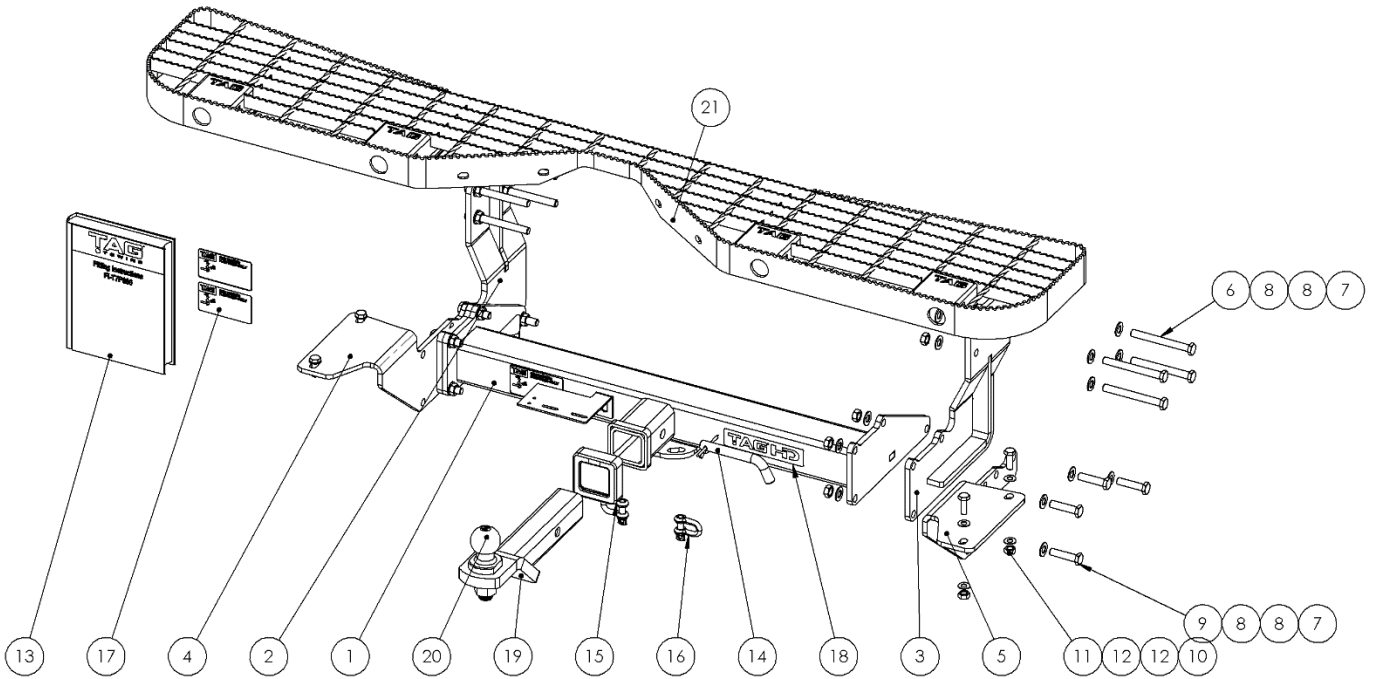
TOOLS REQUIRED

- Spanners
- Sockets
- Air Saw or similar.
- Trim Removal Tool
- Torque Wrench

IN THIS GUIDE

- Fitment Instructions
- Torque Settings
- Warranty Info

Towbar Assembly



Item No.	Description	QTY.	Item No.	Description	QTY.
1	Cross Member Assembly	1	12	M10 Flat Washer	8
2	End Plate Assembly	1	13	Fitting Instruction	1
3	End Plate Assembly DS	1	14	Class 4 Pin & Clip	1
4	Step Mount	1	15	TAG Hitch Cover	1
5	Step Mount DS	1	16	D-Shackle - 10mm. 1000kg,	2
6	M12 x 1.25 x 110 Bolt	8	17	TAG Compliance Sticker	3
7	M12 x 1.25 Nut	16	18	TAG HD Sticker 150 x 33mm	1
8	M12 Flat Washer	32	19	L4045 TBM	1
9	M12 x 1.25 x 50 Bolt	8	20	50mm TAG Tow Ball - Chrome	1
10	M10 x 30 x 1.25 Bolt	4	21	TAG Rear Step with Towing Relief	1
11	M10 X 1.25 Nut	4			

Important Information



Warning:

- This product is for towing purposes only and must only be loaded as shown in your vehicle Owner's Manual.
- This towbar is NOT to be drilled, cut, welded, or modified in any way.
- Check behind chassis rail and body panels before drilling to ensure no hazards are present.
- All load ratings shown are under the assumption your trailer has a functional braking system installed.
- When installed in positions other than the one depicted in these instructions the Tow Ball Mount may interfere or obstruct certain features of your vehicle (tailgate opening, Chassis clearance, etc.)

General:

- Before fitting this towbar read fitting instructions and check installation hardware is correct.
- Check that the towbar is suitable for the vehicle and be wary of any changes to the vehicle design that may conflict with the fitting of this towbar. (Tray, Canopy, Suspension etc.)
- After drilling, blow any filings clear, remove any burrs and treat exposed metal with a rust inhibitor.
- The high tensile fasteners supplied with this product are an integral feature to achieving the specified rating, if replacement is required ensure that fasteners of the same grade (8.8) & quality are used. Contact an authorised TAG distributor or the TAG fitment center - (07) 3208 3022 - if further information is required.

Towbar Maintenance and Care:

It is recommended, when not in use, that the Tow Ball Mount assembly and class 4 Pin and Clip is stored inside the car away from moisture to prevent standing water from forming rust. Inspect to ensure, on regular basis, fasteners are torqued to the specifications below and in good condition.

Ensure that the fitting instructions are read and understood prior to fitment, Following the fitment place these instructions in the vehicle's glovebox after installation is completed.

Metric Bolt Torque Settings

Diameter	Pitch	Grade	Torque	Unit		Diameter	Pitch	Grade	Torque	Unit
M8	1.25	8.8	29	Nm		M12	1.25	10.9	125	Nm
M10	1.25	8.8	57	Nm		M12	1.50	10.9	105	Nm
M10	1.50	8.8	44	Nm		M14	1.25	10.9	195	Nm
M12	1.25	8.8	101	Nm		M14	1.50	10.9	165	Nm
M12	1.50	8.8	97	Nm		M16	1.25	10.9	295	Nm
M12	1.75	8.8	77	Nm		M16	1.50	10.9	250	Nm
M14	2.00	8.8	122	Nm		50mm Tow Ball	N/A	N/A	300	Nm
M16	2.00	8.8	190	Nm		70mm Tow Ball	N/A	N/A	750	Nm

Installation Instructions



Step 1: Remove Rear Bumper Step & Support

Note to installer: Fitting of this towbar & galvanised step requires the removal of the OEM bumper step and relocation of the genuine sensors (if fitted). It is recommended that the provided RSM Kit be used to relocate the Genuine reverse sensors onto the step & the wiring extended. Please disregard the plastic filler plugs included.

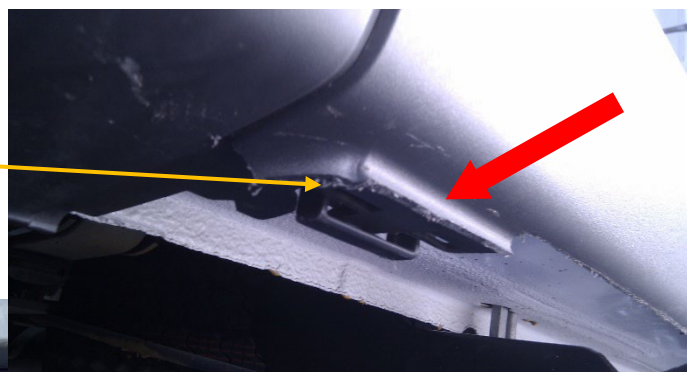
- a. Open the rear doors.
- b. Lower the spare tyre by loosening the safety bolts/ hook securing the spare tyre cradle.
- c. Remove the harness from the step support.
- d. Disconnect each of the sensors from the main harness, (if fitted).
- e. Remove the reverse sensors from the bumper step & retain, (if fitted).
- f. Remove & discard 4x plastic scrivets from the step tread of the rear bumper. Discard scrivets.
- g. From below the rubber seal at the bottom of the door entry, remove 3x torx head screws. Retain bolts.
- h. Remove 2x torx head screws from the corner bumper covers. Retain bolts.
- i. Carefully separate the bumper step section from the 2x outer bumper covers.
- j. Remove 3x M12 bolts & nuts from each chassis rail fastening the step support assembly. Discard bolts & Step support.
- k. Using an air hacksaw or similar cutting device, cut and remove the molded rear step from the top section of the bumper.

Note: Do not cut off the clips which attach the centre section to the 2x outer bumper covers.

- l. De-burr all cut edges.
- m. Re-install the centre bumper to the vehicle making sure to fasten the corner covers.



Clips fasten bumper centre to bumper corners



Step 2: Fit Towbar

- a. Insert 4 x M12 x 1.25 x 110 bolts with flat washers into the holes on the outside of each chassis rail.
- b. Lift the end plates up to the inside of each chassis rail and align the holes. Push the M12 bolts through and loosely fasten with M12 x 1.25 nuts with flat washers. Repeat on the opposite side.
- c. Lift the main bar assembly up to align with the holes in the endplates.
- d. Insert 1 x M12 x 1.25 x 50 bolts **per side** in the forward-most, lower hole. Secure loosely with nut & washer on the inside.
- e. Rotate the main bar assembly up and **temporarily** insert 1 x M12 x 1.25 x 50 bolts **per side** in one of the rear-most holes.
- f. Attach the step mounts one at a time to the outside of the endplates by removing one of the previously inserted rear-most bolts, aligning the holes and loosely securing them with 3 x M12 x 1.25 x 50 bolts **per side**.
- g. Lift the galvanized step onto the step mounts and loosely secure with 2 x M10 x 1.25 x 30 bolts with flat washers and nuts per side.
- h. Beginning at each chassis rail, tighten all bolts according to the torque specification on page 3.
- i. Be sure to align the step with the bumper prior to tightening the M10 bolts.
- j. Raise the spare wheel in its cradle and tighten the safety bolts/ hooks.



Installation Instructions



Step 3: Complete Towbar & Apply Spare Compliance Label

- a. Attach TAG Hitch cover with rubber mallet carefully to prevent breaking.
- b. Attach Tow ball to Ball Mount and slide into receiver. Secure with Pull pin and Clip if you are going to tow straight away. Alternatively, secure the Ball Mount in a safe place inside your vehicle.
- c. Apply one of the compliance labels to the pillar of the driver's door. Leave the remaining label and the fitting instructions in the vehicle handbook.



TAG Warranty Statement



SWD warrants your TAG Towbar for its full product life under the following conditions:

- You can show proof of purchase.
- The towbar has been correctly installed by a suitably qualified installer.
- The towbar has not been modified or abused in any way and has only been used for the purpose intended.
- The towbar was not fitted second hand to your vehicle.

The extent of this warranty includes materials and workmanship used in the manufacture of the towbar and is to the equivalent value of current, full replacement cost.

Nothing stated or implied in this warranty limits in any way, the statutory rights that you may have.

To make a claim visit the original installer in the first instance or, if you are unable to or are not satisfied with their help, then contact us direct by phone on 1300 669122 or visit www.swd.com.au.