



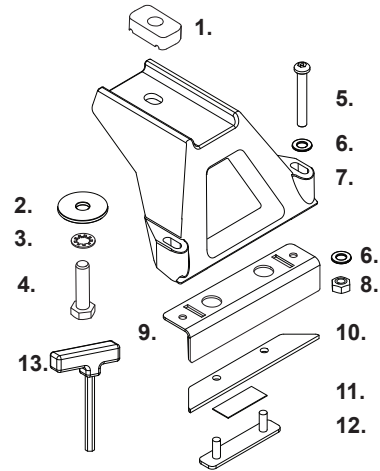
RHINO-RACK

Toyota SBV Leg Kit SBVLK

NOTE: Please read these instructions carefully prior to installation.
 Check the contents of kit before commencing fitment and report any discrepancies.
 Place these instructions in the vehicle's glove box after installation is complete.

Parts List

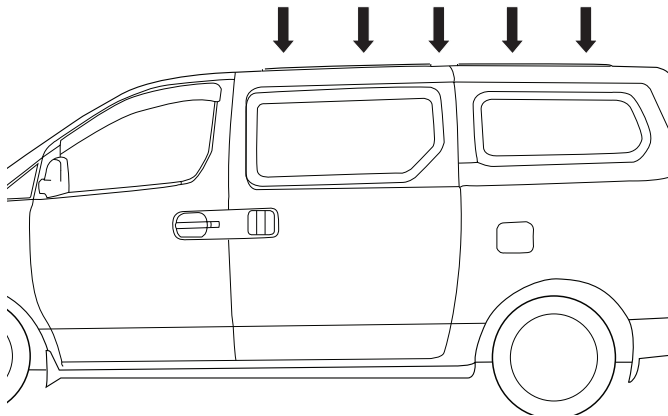
Item	Component Name	Qty	Part No
1	M10 Channel Nut	2	N024
2	M10 38mm x 2.5mm Flat Washer	2	W022
3	Internal Shake Proof Washer	2	W021
4	M10 x 25mm Hex Setscrew	2	B071
5	M6 x 40mm Button Security Screw	4	B085
6	M6 x 12.5mm Flat Washer	12	W003
7	RLTF (STD) Leg	2	M010
8	M6 Nyloc Nut	8	N013
9	RLTF SVB Bracket	2	C094
10	Gasket SBV	2	C099
11	Adhesive Pad	2	C302
12	SBV Twin Stud Plate	2	C098
13	Security Key Short	1	SECKEY-S
14	Instructions	1	RR02



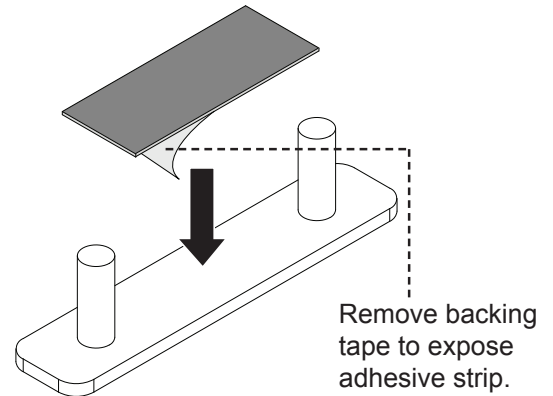
Tools Required:
 1: 16mm Wrench. 2: 10mm Wrench.

Instructions

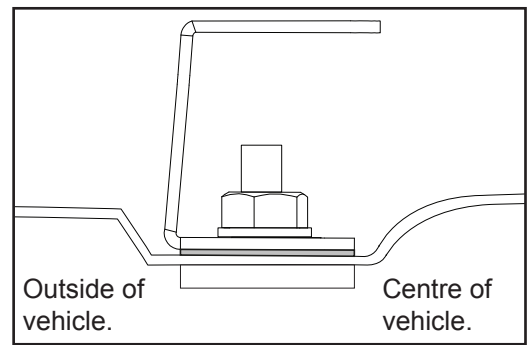
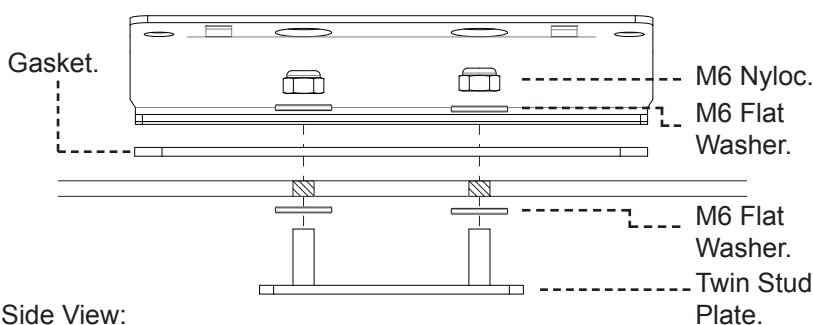
1 Undo the current vehicle fixing brackets in the locations intended for Crossbars. Roof liner may need to be removed.



2 Apply Adhesive Pad to the Twin Stud Plate as shown. Apply force to the Pad and Plate for 30 seconds to ensure adhesion.



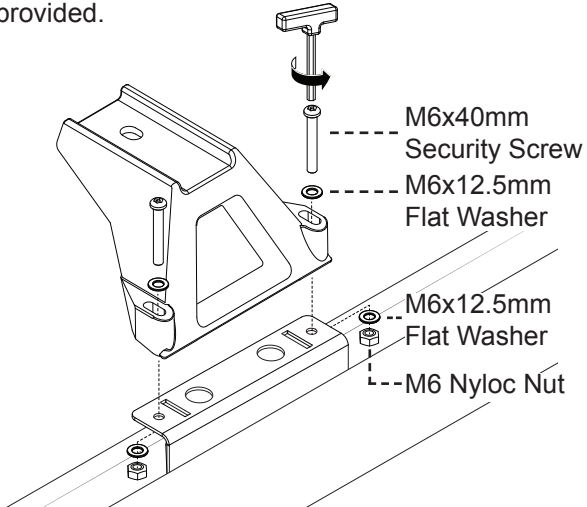
3 Push the Twin Stud Plate up through the vehicle from the inside using the newly exposed holes. The Adhesive Pads should hold the Plates in place. Place a Gasket and SVB Bracket over the top in the orientation shown below. Fix the assembly in place with M6 Flat washers and Nyloc Nuts.



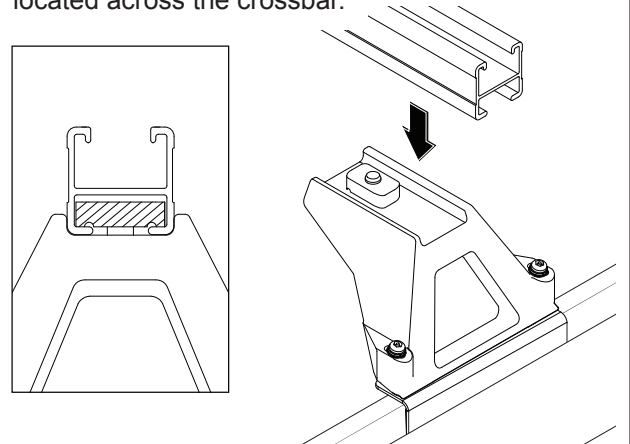


Toyota SBV Leg Kit SBVLK

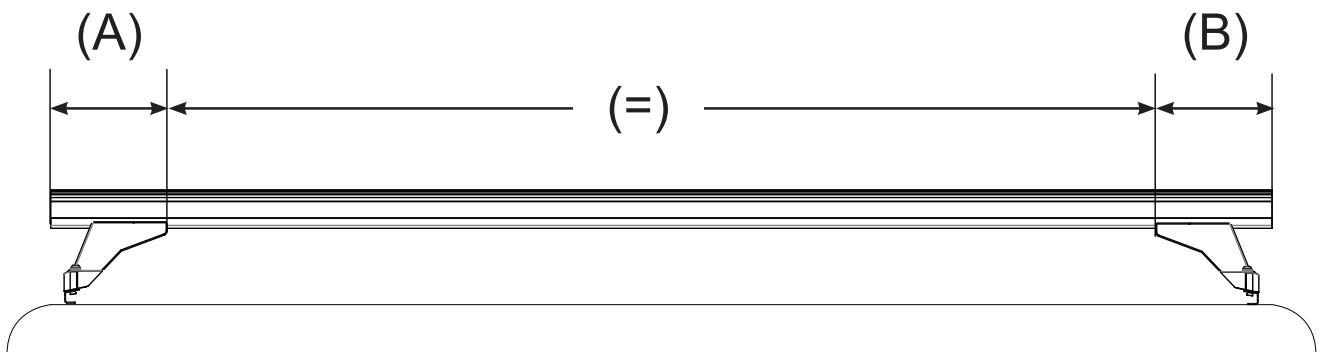
- 4** Attach the Legs to the installed Brackets with M6 x 40mm Security Screws, M6 Flat Washers and Nyloc Nuts as shown. Tighten to 6Nm with the Allen Key provided.



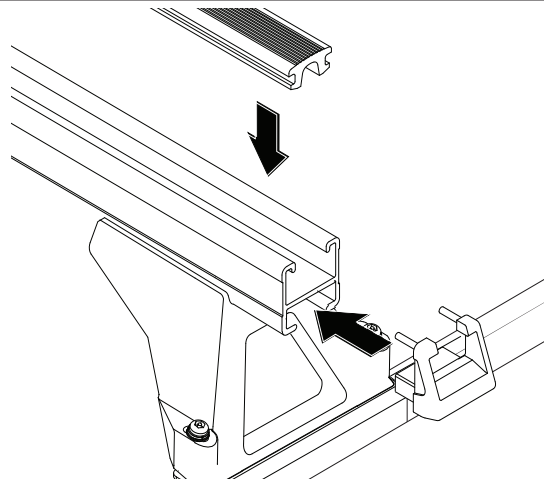
- 5** Place the Heavy Duty Bar onto the support legs. Push the crossbar attachment bolt up and turn the bolt so that the channel nut is located fully across the crossbar. Finger tighten the crossbar attachment bolts. Check that the channel nut is fully located across the crossbar.



- 6** Tighten all legs to bracket attachment bolts. Ensure the crossbar overhang (A) (B) is equal on both sides, re-adjust if required. Tighten all crossbar attachment bolts to 4-5Nm. **Do not over tighten.**



- 7** Insert the HD Rubber Strip into the top of the crossbar (sold as separate), check that the Rubber is fully inserted, then fit the End Caps (sold as separate) into the Crossbar ends.



Rhino-Rack
3 Pike Street, Rydalmere,
NSW 2116, Australia.
(Ph) (02) 9638 4744
(Fax) (02) 9638 4822

Document No: RR02
Prepared By: Kayle Everett
Authorised By: Chris Murty

Fit Time: 45min
Issue No: 03
Issue Date: 30/10/2015

These instructions remain the property of Rhino-Rack Australia Pty. Ltd. and may not be used or changed for any other purpose than intended.