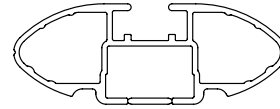
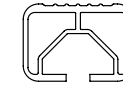




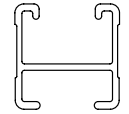
**CROSSBAR IDENTIFICATION**



**VA crossbar**

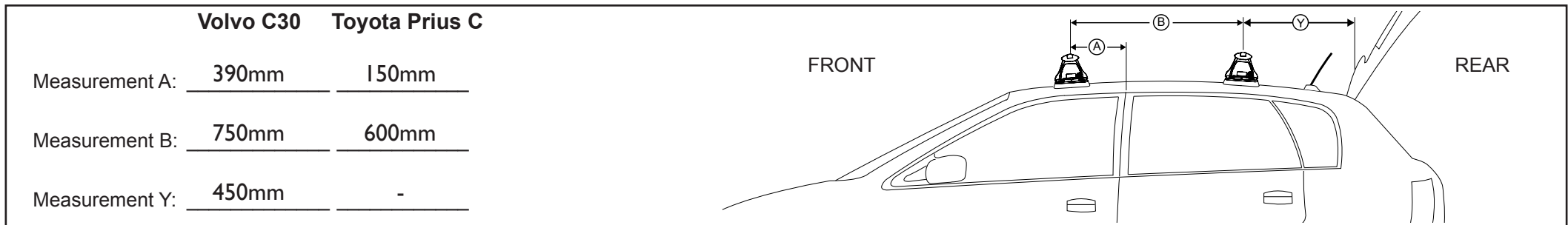


**EURO crossbar**



**HD crossbar**

Vehicle	Date	Crossbar	FRONT CROSSBAR						REAR CROSSBAR							
			Front Pad	M6 Stud length (mm)	M6 Screw length (mm)	Measurement strip length per side	Measurement strip length per side	Measurement Distance (x)	Foot plate arrow direction	Rear Pad	M6 Stud length (mm)	M6 Screw length (mm)	Measurement strip length per side	Measurement strip length per side	Measurement Distance (x)	Foot plate arrow direction
Volvo C30 3dr hatch	06-13	1260mm	M473	30	35	152mm	-	952mm / 37,31/64"	OUT	M473	30	35	84mm	-	816mm / 32,1/8"	OUT
Toyota Prius C	2012-On	1065mm	M473	30	35	183mm	-	819mm 32,1/4"	OUT	M473	30	35	168mm	-	789mm 31,1/16"	OUT

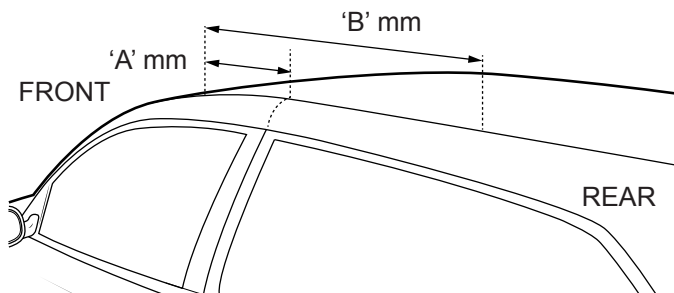


**Please Note:** For further instruction on Toyota Prius C refer step 1 on following page and RDM01 Generic Instruction R877. For Volvo C30 refer steps 1 - 9 on following page.

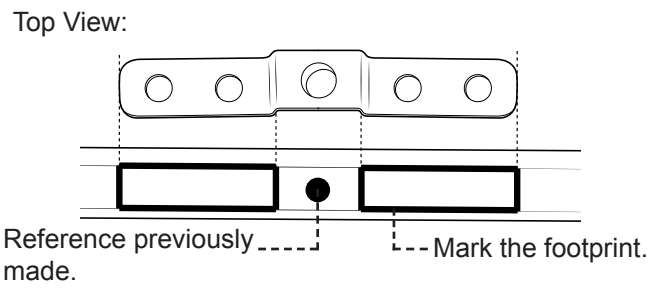


# DK452 Rhino-Rack VA, Euro & HD crossbar instruction

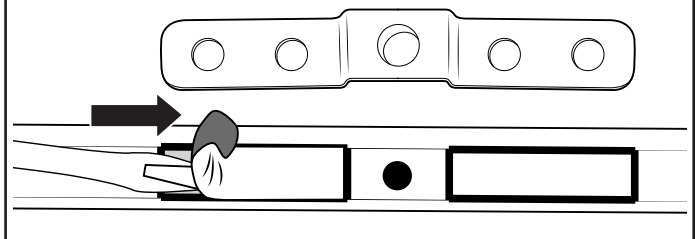
**1** Measure out from the door jamb 'A' mm forward and 'B' mm backward in the roof ditch. Make a reference point at these measurements.



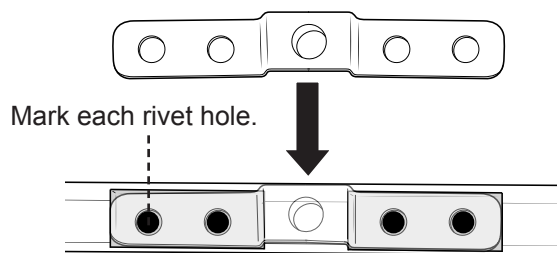
**2** Place the RDM01 Bracket centred at the points previously made. Mark the footprint of the bracket in the roof ditch.



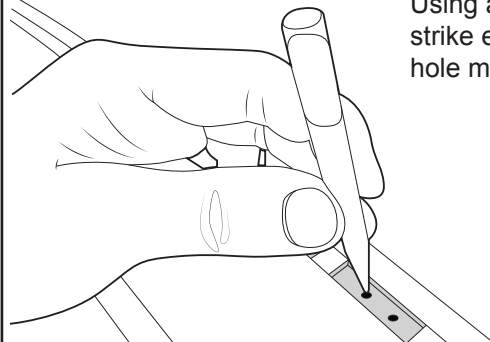
**3** Place the bracket to the side. Using a flat blade screwdriver, scrape out the body fill within the footprint previously marked. Be sure to scrape out all the material in these areas.



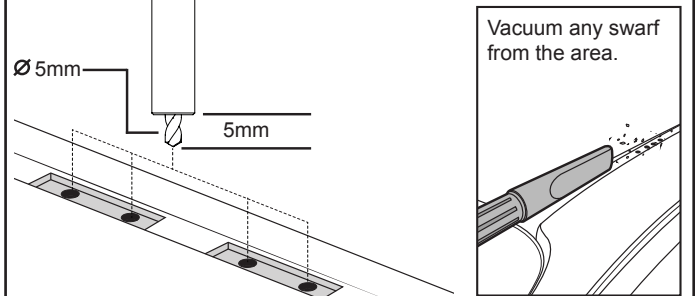
**4** Place the bracket back into the scraped out footprint. Use a marker and create a reference in the four rivet holes in the bracket.



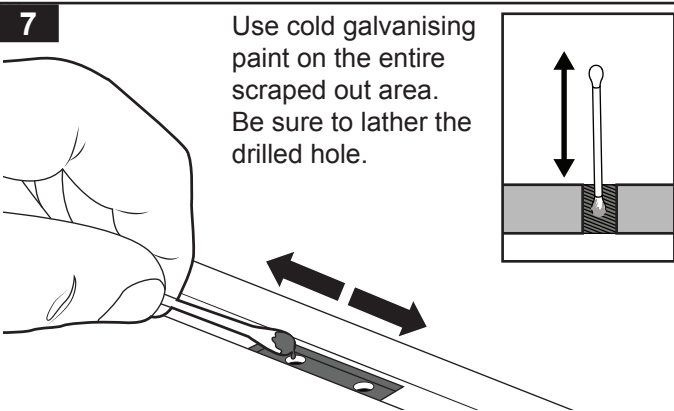
**5** Remove the brackets. Using a centre punch, strike each of the rivet hole marks.



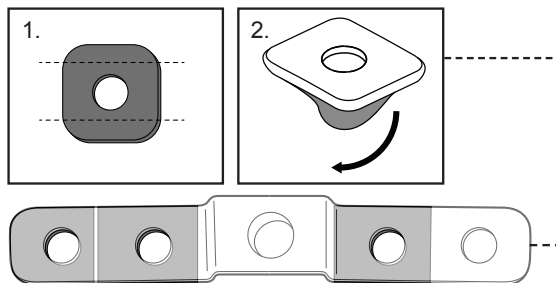
**6** Drill out the rivet holes with a 5mm drill bit. Use a drill stop set to 5mm.



**7** Use cold galvanising paint on the entire scraped out area. Be sure to lather the drilled hole.



**8** 1: Cut the butyl patches to fit the underside of the bracket. 2: Remove the backing tape from the patches and stick to the brackets.



**9** Remove final layer of backing tape from patches. Press the Ditch Brackets into position over the drilled holes. Using a Pneumatic Rivet Gun, fix the Brackets in place with Rivets provided. Be sure Brackets are aligned correctly.

